

Hill End

**Step back in time to the
1870's gold rush.**



Bathurst
step beyond



Hill End Historic Site is a heritage listed former gold rush town with rare historic, technical and aesthetic significance in Australia's History.

A Brief History of Hill End

Long before the gold rush of the 1800s, the area surrounding Hill End was used by the Wiradjuri people as a reliable source of water and an ideal campsite. Prior to the discovery of gold the area was known as Bald Hills and was apart of the Tambaroora area. The site was proclaimed a village in 1860 originally called Forbes, before being renamed Hill End in 1862.

The Discovery of Gold 1823

Gold was first discovered in Bathurst at Fish River in 1823, by assistant surveyor James McBrien. Due to fears of a societal upheaval, the news was kept quiet by the local colonial government for 28 years.

The Gold Rush 1851—1873

Gold in the region was kept secret until Edward Hargraves discovered payable gold in Ophir in 1851. Soon after the announcement was made, hundreds of hopeful miners rushed out to the countryside seeking their fortune. In the following months more gold was discovered withing the region. Mining occurred throughout the Bathurst region from the banks of the Turon River to the hills of Hargraves, with Hill End becoming a centre for reef mining in the 1870's.

Reef mining is the process of mining shafts to extract quartz rich in gold, which is then broken down and separated via intense heat in roasting pits or crushing through specialised machinery . You can see examples of both methods at the Cornish Roasting Pits or the Stamper Battery on the Bald Hill Walking trail.

The Holterman's Nugget

At 2am on the 19th of October 1872 at the Star of Hope Mine the Holterman's Nugget was discovered after a midnight firing of explosives. The "Nugget" was actually an intact section of reef with a total weight of 285kg, and a gold weight of 93.2kg. Soon after it's discovery it was crushed and the gold extracted.

Post Gold Rush

In the years after the Second World War, the region attracted the attention of some of the country's leading contemporary artists. The distinctive blend of the striking landscape, gold-mining history, and vernacular architecture continue to inspire the works of many notable Australian visual artists. Several of these collections are on exhibition year-round at Bathurst Regional Art Gallery in Keppel Street, Bathurst.

Today the town is a National Park and a living village with just over 100 residents. The wonderfully preserved historic buildings are almost as they were at the height of the gold rush in the 1870s, providing a fascinating opportunity to explore what it was like to live and work in a major commercial centre of the 1800s.



Holterman's Nugget
restored replica. Image
George Smith, Australian
Museum

Hill End Visitor Map



Map Produced by NSW National Parks & Wildlife Service 2022

Getting There

Hill End is located 1 hour and 15 minutes North of Bathurst. Most commonly travelled from Bathurst via the Sofala road.



Scan here for google maps directions to Hill End

Explore History and Heritage in Hill End

The village of Hill End itself is a protected historic site managed by NSW National Parks & Wildlife Service. Being a living village with residents it is also one of the few pet friendly National Parks in the state. Follow the Village Walking Track to get your bearings and explore, there are plenty of historic buildings, picnic areas and sites to see.



Scan here to read about the Village Walking Track

Hill End Heritage Centre

Open: 7 days a week 7am-7pm

Address: 1 Beyers Ave, Hill End

A great starting point is the Hill End Heritage Centre, an interactive museum housed in the former RFS shed and located in the main street of the village. It houses a collection of photographs, artefacts, the remains of a miner's cottage and an interactive display.



Hill End Tambaroora Family History Group

Open: Wednesday 11am-2pm, Saturday 11am-2pm, Sunday 10am-2pm.

Address: 1 Clarke Street, Hill End

With Hill End and Tambaroora being of such historical significance it was time to find a facility to provide a place to do the research and to store the data. A place where like-minded people could gather and compare their research. A place where people from all over Australia could find answers about their Hill End ancestors.



Scan here to read about the Hill End Tambaroora Family History Group

Craigmoor House

Open: For guided tours by appointment only.

Address: 28 Beyers Ave, Hill End

Contact: Hill End National Parks Office 02 6370 9050

The two-storey timber house boasts embellished timberwork and other impressive Gothic features, taking the Duke of Elgin's hunting lodge in Scotland as its design cue. Original owner James Marshall must have been truly taken with Hill End as he decided to build Craigmoor in 1875 – well after the town had passed its heyday.



History Hill Museum

Open: Weekends/Long Weekends/School Holidays 10am-4pm.
Week days Phone Ahead to check availability.
Entrance fees apply.

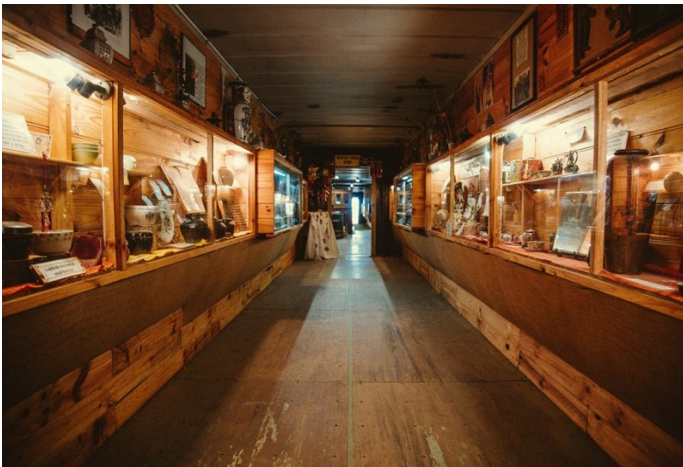
Address: 3458 Hill End Road, Hill End NSW

Contact: 0428 378 222



Scan here to read more
about History Hill Museum

History Hill is located on 1200 acres one and a half kilometres outside Hill End and is the culmination of a life's work for Malcolm Drinkwater. It will keep any visitor enthralled for hours.



The Museum

The museum houses over 10,000 gold rush artefacts as well as:

- Mining Tools
- Historic Photos
- Steam Engines
- Stamper Batteries
- Gold Scales
- Blacksmith Shop/Stables
- Rare Uranium Glass
- Chinese Connection
- Geology Section
- Colonial & Convict History

If it is goldfield/gold rush or Australian colonial history related we probably have it.

The Mine

The Son of Hope mine, was built for purpose, safety, location, education, authentic history, and above all people visitation with easy access. There are 175 meters of underground mine ready for visitors to experience.

Our guides have a wealth of knowledge and experience that ensures the visit of a lifetime.



Fossicking

While the heyday of the goldrush is long over there is still gold to be found in the Hill end region.

Jhob's gold Panning Tours

Open: By appointment call to book a tour.

Contact: 0421729955

Cost: \$40 minimum or \$10 a head for groups of 4 or more. Week day rates are double, except for school holidays. Cash only.

Hill End local and gold panning expert Jhob Drinkwater runs regular gold panning tours in Hill End. With all equipment supplied and his local knowledge his tours are a great way get out and make the most of your first time panning.



Scan here to read more about Jhob's Gold Panning Tours



Simmo's Offroad Tours

Open: By appointment

Contact: 0415 641 343

Cost: Costs vary based on itinerary.

If your looking for an adventure Simmo's Offroad Tours can offer a half day or full day gold panning four wheel driving tour around the Hill End area. His tours are fully customisable whether you want to ride along in his car or follow along in your own for a tag along tour Simmo can organise an itinerary to suite you.



Scan here to read more about Simmo's Offroad Tours



Attractions

Bald Hill Lookout

Offering panoramic views of Hill End and the surrounding area, Bald Hill Lookout is accessible by a 3km drive from the Town Centre.



Bald Hill Walking Track

4km Loop, 1hr 30 min – 2hr 30 min.

Bald Hill walking track is an easy walk that meanders through open woodlands, past the historic relics of old mine workings. Situated in Hill End Historic Site, this scenic loop walk begins on Reef Street and offers an insight into the working conditions of the miners.



Scan here to read more
about the Bald Hill Walking
Track

Beaufoy Merlin Lookout

Beaufoy Merlin lookout is a great spot to look out over the area once known as "the richest quarter mile in the world". It's only a short drive from town or an easy walk along the road if you add it to your Hill End village tour or Bald Hill Walking Track.



Cornish Quartz Roasting Pits

A 15 minute drive North from the Hill end Town Centre the Cornish Quartz Roasting Pits offer a glimpse in the early process of reef mining in Hill End where quartz clusters were roasts at high temperatures to extract gold.



Valentines Mine

10 minutes North of the Hill End Town Centre, Valentines Mine showcases some of the oldest mining remnants in Australia. Including a mining water tank and stamper battery that was used to crush quartz and extract gold.



Food and Drink

24 Carrot Café (The Hill End General Store & Café)

Open: 9am-4pm Wednesday-Monday

Address: 3 Beyers Ave, Hill End NSW

Contact: (02) 6337 8111

Serving up hot coffee, hearty lunches and delightful afternoon teas. The Hill End General Store & Café is a great spot in the town centre for any meal. With local craft products and a frequently refreshed specials board you will always find something new to try.



Scan here to read more about the 24 Carrot Café



Hill End Estate

Open: 10am-5pm Weekends

Address: 3664 Hill End Road

Contact: 0428 980 803

Open on weekends Hill End Estate is serving up a taste of the country with home made jams, pies, gourmet ice cream and Devonshire tea in their beautiful café and garden. Frozen take away pies available.



Scan here to read more about Hill End Estate



Hill End Royal Hotel

Open: From 11am 7 days a week

Address: 4 Beyers Ave, Hill End NSW

Contact: (02) 6337 8261

Royal Hotel is a cozy take on a traditional and historic hotel bar bistro. Located in the heart of Hill End, we make sure that if you're looking for a day of fun and entertainment, we're the only place you will want to be! From the music to the delicious list of drinks, our incredible staff proudly craft a unique experience for our guests. Whether you're on a weekend out or just trying to quench your thirst, you're always welcome!



Scan here to read more about the Royal Hotel Hill End



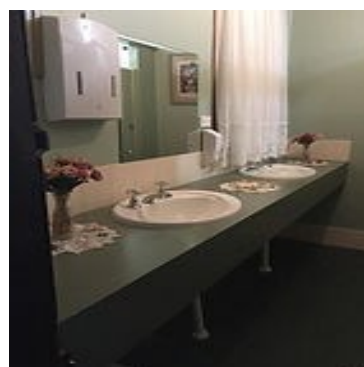
Royal Hotel Accommodation

Whether you're traveling alone or with company, one of our rooms is definitely tailored for your needs. All rooms include a continental breakfast in the morning.

Accommodation available with capacity for up to 20 people. With single, double, twin and family rooms available.



Scan here to for information about rooms, rates and bookings.



Accommodation

Want to make the most of your trip to Hill End? Why not stay the night? There are plenty of options to suite everyone from single travellers to large groups.

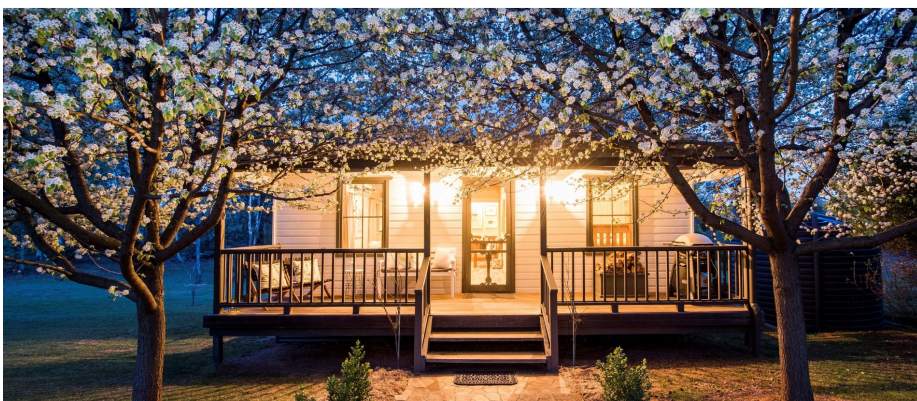
The Guest House

Capacity: 2 bedrooms, sleeps 4 guests

Address: 26 English Lane, Hill end

Contact: 0408 969 481

The Guesthouse is Hill End's finest self-contained accommodation, set on a private two-acre property hosting up to four guests in a two-bedroom cottage.



Scan here to read more about The Guesthouse

National Parks Managed Accommodation

National Parks and Wildlife Service operate several different accommodation options throughout Hill End, including heritage buildings and powered caravan sites. **All of the below options** can be booked by calling the National Parks Contact Centre on **1300 072 757** or by booking online at nationalparks.nsw.gov.au

Fairfax House

2 bedrooms, sleeps 4 guests.

Nestled among trees at the edge of Hill End, Fairfax House is the perfect place for a secluded country getaway with an historic twist. Built in the 1870s, it retains some of its original structures.



Hill End Pines Cottage

2 bedrooms, sleeps 4 guests.

History buffs will love this authentic 1800s wattle-and-daub cottage, nestled among pine trees. Tastefully renovated, Hill End Pines Cottage is the perfect country getaway for small families.



Hosies

7 Bedrooms, sleeps 12 guests.

Located in the heart of town, combining modern comforts with the atmosphere of a bygone era. During your stay, you'll get to enjoy the building in its entirety, including the lower level with a full kitchen, dining and lounge area.



Northeys Apartment

1 bedroom, sleeps 2 guests.

Built in 1873, Northeys is one of the most recognised icons of Hill End. Many artists who have visited Hill End have drawn inspiration from this historic building in their works.



Post Office Residence and Stables

4 bedrooms, sleeps 8 guests.

Stay in stylish heritage accommodation at the Post Office Residence or The Stables. Enjoy comfort and convenience as you discover the country charms of historic Hill End Historic Site, between Bathurst and Mudgee.



Sydney Hotel Cottage

2 bedrooms, sleeps 4 guests.

Built in the 1870s and now one of only a few surviving weatherboard hotels in NSW, it's a history buff's delight. Located in the heart of the village, you'll have



Caravan and Camping Sites

Powered sites, toilets, showers, drinking water and wood fired barbeques available.

Glendora Campground

The Village Campground



Bathurst Visitor Information Centre

1 Kendall Avenue

02 6332 1444 / 1800 68 1000

www.bathurstregion.com.au

visitors@bathurst.nsw.gov.au

Open 7 Days



Visit Bathurst NSW



@visitbathurst



@visit_bathurst

All images and information in this booklet are obtained from the Bathurst Visitor Information Centre's resources, the National Parks & Wildlife website, The Australian Museum as well as from the businesses represented in this guide.

All efforts have been made to ensure correct information has been resented at time of print 17/10/22.

All information presented in this guide is subject to change without notice.

